



Normanton-on-Soar Primary School

"Soaring High Together"

Upcoming dates

23/2/26 – school reopens
25/2/26 – Robins forest school – CHANGED DAY
27/2/26 – Owls forest school – CHANGED DAY
3/3/26 – PE - Owls and Robins (swop - No WOODPECKERS TODAY)
3/3/26 - Phonics cafe#2 3.30-4.00 – drop in
5/3/26 – World Book Day – Dress up day but PE taking place as well!
5/3/26 - PE - KING and WOOD (swop - NO Owls PE today)
6/3/26 – KING forest school session
9/3/26 – SCIENCE WEEK
10/3/26 - STEM SESSION
11/3/26 – Manor Farm visit – Owls and Wood – this replaces OWLS forest school this week
19/3/26 - Friends Easter craft event 3.30-4.30
20/3/26 – Red Nose Day
24/3/26 – Easter visit to church 2pm
25/3/26 – EQT singing event
26/3/26 – parents evening
27/3/26 – school closes at 3.30 for Easter break
13/4/26 – school reopens

Headteacher message

Welcome back to school. I hope you all managed to have a nice break despite the English weather!

We have a short 5 week half term ahead of us so will be working at double speed to get through 6 weeks of planned curriculum! We complete assessments during this half term and will hold parent meetings at the end of the term to discuss your child's progress and next steps. This will be on Thursday 26th March. We will add this to Arbor.

Clubs from February 2026

Gardening club will be running this half term on Mondays 3.30-4.30.

Equals Trust

Singing event at Nottingham Albert Hall. We have space for 15 children to take part. Open to all in KSI and KS2.

Scitech event – Make an egg buggy – This is a make at home event – see following information

Easter craft event – Friends of school fundraiser



Thursday 19th March

3.30-4.30

£5

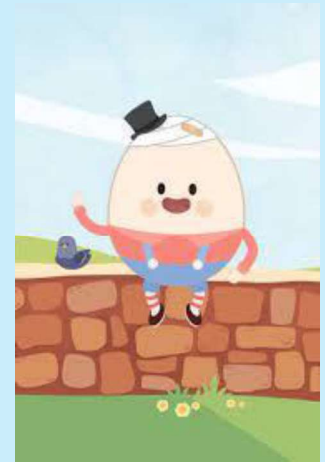
Come along, do some crafts, eat some snacks and have fun!

Thank you all for your continued support *Sarah Philpott* (Head Teacher).

EQT Annual Science & Technology Competition 2025-26

EGG BRAKE

Design Brief



1) The aim is to design and build a **self-propelled** transporting device (buggy) capable of carrying a **raw egg**. The buggy must attempt to reach a wall the following distances from the starting point, stopping as close to it as possible. The closer the buggy stops to the wall without touching it, the fewer the number of points awarded. The winner will be the buggy scoring the lowest number of points.

- KS1 (Years 1 and 2) – 2 metres to the wall
- LKS2 (Years 3 and 4) – 4 metres to the wall
- UKS2 (Years 5 and 6) – 5 metres to the wall

2) The buggy must be self-assembled. Commercially made chassis will not be accepted, nor will any form of remote control or manufactured timing devices. Individual parts of the machine may consist of manufactured pieces e.g. motors but commercially made buggy chassis will not be accepted. Construction kits i.e. Lego Technic / Meccano / K-Nex may be used.

3) The egg must also be **protected**. If an impact occurs and the egg breaks at any point during the run, then **35 points** will be added to the overall score.

4) The eggs used will be ASDA smart price (medium) sized. (Provided by us on the day). They will be raw and not hard boiled (not even a little bit).

- 5) The finished transporter must **not be**:
- A)..... Longer than 80 cm.
 - B)..... Wider than 70 cm.
 - C)..... Higher than 100 cm.

Ideas/Starting Points

5) Some possible methods for driving the buggy might be:

- Elastic/elastic bands wound around an axle and secured to the chassis.
- An electric motor driving the wheel controlled by a self-built cut off device.
- An electric motor driving a propeller controlled by a self-built cut off device.
- An elevated weight driving the wheels as it falls.
- A thin springy object used to store a given amount of energy connected to an axle by cord.
- Jet power, using a carefully filled balloon and a very light and efficient chassis with low resistance, remember your egg will weigh around 63 grams.
- Stored power in a bent piece of metal.
- Any other method you come up with.

6) Your buggy may need a **braking system** or you might choose to experiment with varying the amount of drive and leaving the braking to the (minimal) friction on the school's smooth wooden hall floor (freewheeling).



Normanton Friends Update

- Gardening Club re-starts Monday 23rd February, 3.30–4.30pm. Please book and pay via Arbor.
- Thank you to everyone who supported our sweet treat sale – we raised around £75! We still have some stock remaining, so final profit is to be confirmed. Leftover items will be used at our next sale at the end of this term – watch this space.
- We are applying for a licence to hold cinema events at school – more details coming soon.
- Fundraising suggestions are always welcome. Please speak to Naomi Lahiff, Jen Berridge, Emma Bentley or any member of the Friends committee.

What has been happening at school? Forest school crafts... sometimes happen INSIDE!

